

WorkLink



WorkLink, work smart !



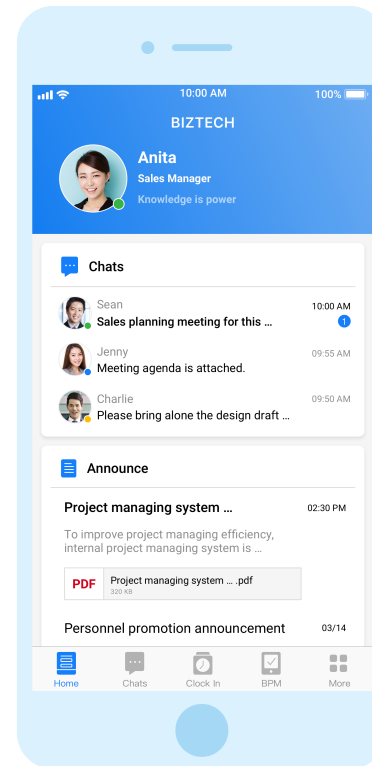
Enterprise exclusive integrated platform of mobile application.
Integration of cloud computing technology and high-level security framework.
BPM EAM FSM Thousands of companies from every industry use WorkLink,
the best cloud-based platform

WorkLink

WorkLink Mobile Business Integration Platform provides a mobile technology core for internal management communication for companies and organizations of different sizes to ramp up work efficiency within the management team and enterprises.

Employing the SaaS (Software as a Service)-based networking business service model, WorkLink not only effectively reduces communication costs but also balances management efficiency and saving paper.

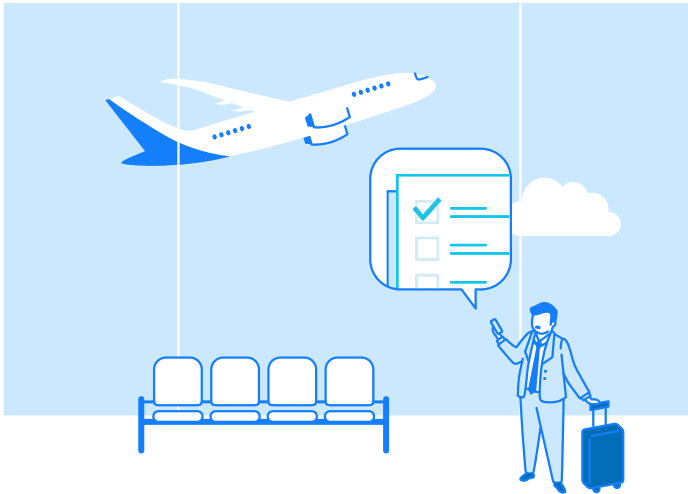
Empower enterprises into mobile management with innovative cloud services.



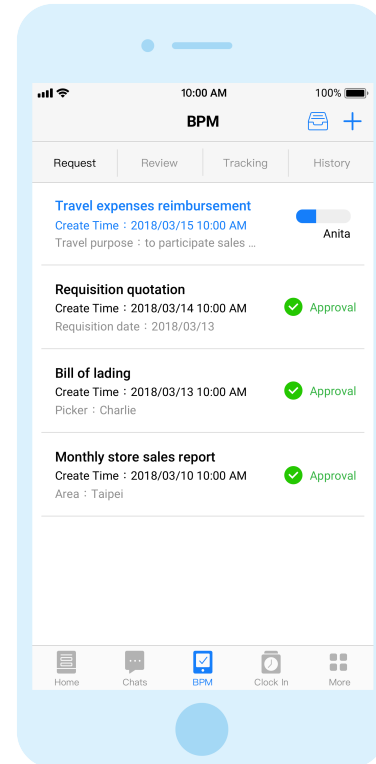


Mobile Approval (BPM) Premium

Mobile document approval function provides flexible process settings and custom of form fields that suit for various approval environments, allowing requesters and approvers complete document approval rapidly without restriction of time and location.

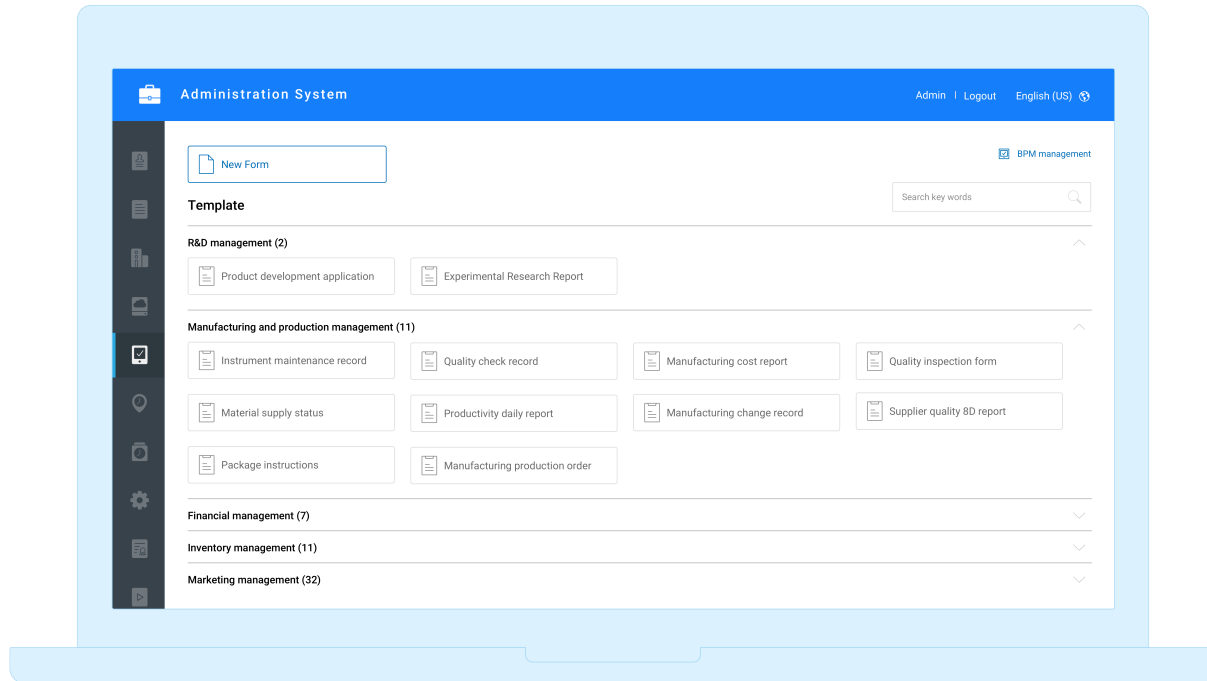


Mobile Approval—approve documents on the road with your mobile. Never carry your business paper documents along with any travel.



Mobile Approval Administration System ►

The system comes with bunch of pre-defined forms and user-friendly interface to create new ones along with approval process of individual forms.

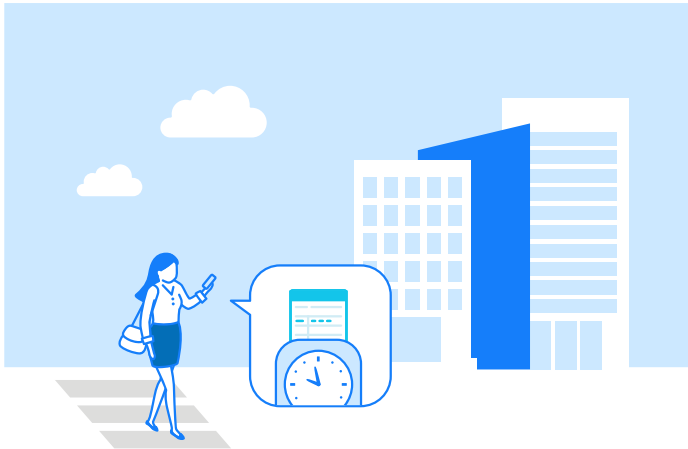




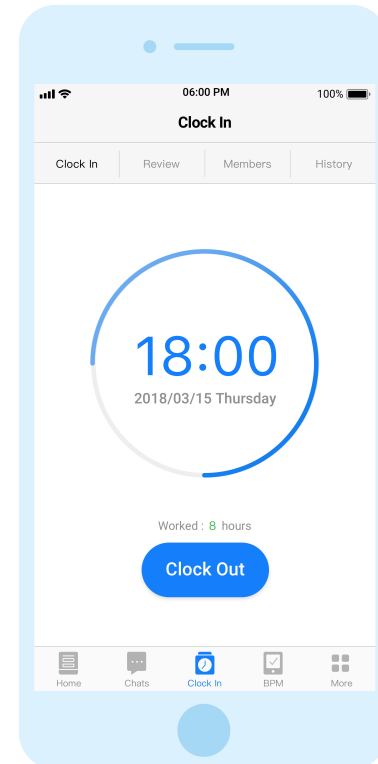
Clock In (EAM)

Premium

Clock in per geographic location function enables record of time and location of daily attendance, attendance data is stored in cloud database that can be exported as reports to calculate working hours.



Clock In—LBS positioning, auto saved in cloud storage with options to export clockin logs and addresses to conform to regulations easily.



Clock In Administration System ►

Log attendance status data (including both time and place) completely, enable administrators' easy review and download for working hour calculation; flexible attendance rule setup; enable employee grouping for easy data statistics and management.

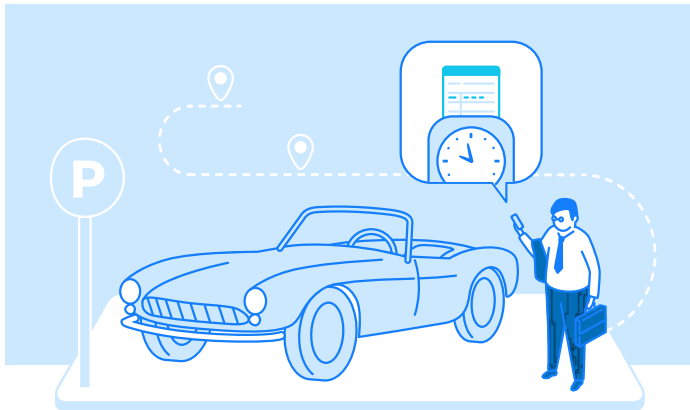
The screenshot displays the 'Administration System' interface for configuring a group's attendance rules. The top navigation bar includes 'Admin', 'Logout', and 'English (US)'. A left sidebar contains various system icons. The main content area is titled 'Group name*' and 'Sales team'. It features several configuration fields: 'Working days*' with checkboxes for Monday through Sunday (Monday-Friday are checked); 'Clock In Time*' set to 09:00 - 09:30; 'Clock Out Time*' set to 18:00 - 19:00; 'Setting time' with 'Flexible commuting' checked and 'Cross day shifts' unchecked; 'Timezone' set to 'GMT + 08 : 00'; and 'Rest period' with two periods: 12:00 - 13:00 and 16:00 - 16:30. A 'Work Hours' summary shows 8 hours. Below the configuration fields, a 'Group members' section shows a list of three employees: Anita (1001, Sales Dept., Sales Manager), Charlie (1002, Sales Dept., Sales Specialist), and Jenny (1003, Sales Dept., Sales Specialist). Each employee has a checkbox and a delete icon. At the bottom right are 'Cancel' and 'Save' buttons.

Group name*	Working days*	Clock In Time*	Clock Out Time*	Setting time	Timezone	Rest period	Work Hours
Sales team	<input checked="" type="checkbox"/> Monday <input checked="" type="checkbox"/> Tuesday <input checked="" type="checkbox"/> Wednesday <input checked="" type="checkbox"/> Thursday <input checked="" type="checkbox"/> Friday <input type="checkbox"/> Saturday <input type="checkbox"/> Sunday	09:00 - 09:30	18:00 - 19:00	<input checked="" type="checkbox"/> Flexible commuting <input type="checkbox"/> Cross day shifts	GMT + 08 : 00	12:00 - 13:00 × 16:00 - 16:30 ×	8

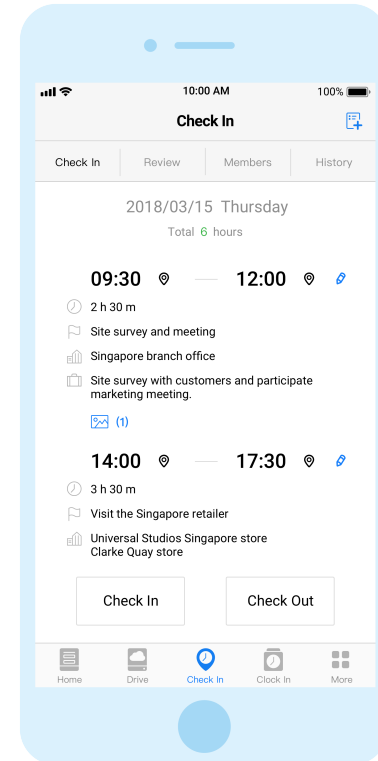
Group members				
Edit list (3) ^				
<input type="checkbox"/>		1001	Anita	Sales Manager
<input type="checkbox"/>		1002	Charlie	Sales Specialist
<input type="checkbox"/>		1003	Jenny	Sales Specialist

Check In (FSM) Premium

The multi-location and multi-time check-in function logs multi-entries of work information covering check-in time, place and contents for easy management and trip records keeping. These records also help executives review records of trips and check-ins of their subordinates.



 < Check In—multi-point and multi-time checkin, log trip, visit information, and photos at ease.



Check In Administration System ►

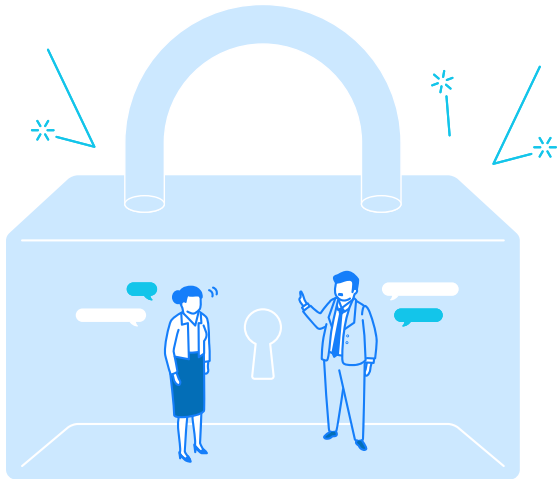
Track employee trip records including time, place and work report; these records may be exported into files for HR's attendance data review.

The screenshot displays the 'Check In' section of the 'Administration System'. The interface includes a sidebar with navigation icons, a top navigation bar with 'Admin', 'Logout', and 'English (US)' options, and a main content area. The main content area shows the 'Personal Details' tab for employee Anita (1001, Sales Dept., Sales Manager). It includes a date range selector for 2018/03/13 to 2018/03/15, a 'Filter' button, and summary statistics: 3 days and 24 hours 30 minutes. Below this is a table of trip records.

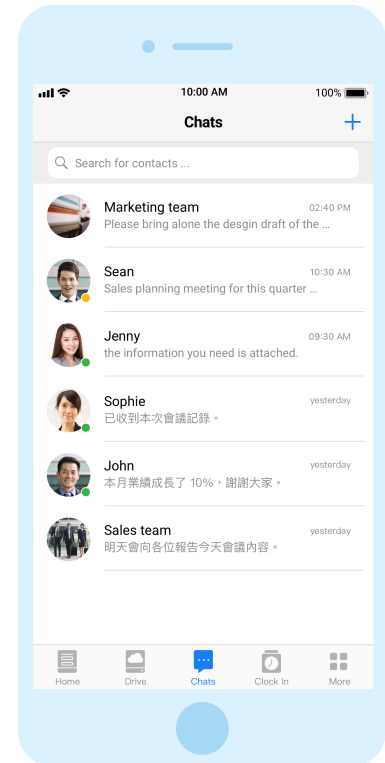
Date	Check In Time	Check Out Time	Working Hours	Job Description
2018/03/14	09:30 ▼	12:00 ▼	2 h 30 m	View Location Subject: Site survey and meeting Location: Singapore branch office Description: Site survey with customers and participate marketing meeting. (2)
	14:00 ▼	17:30 ▼	3 h 30 m	View Location Subject: Visit the Singapore retailer Location: Universal Studios Singapore store (5)

Chats (BIM)

Instant message transmission function is an internal instant communication platform exclusive to enterprise that supports text and file transmission. Message read status can be viewed to increase communication efficiency.

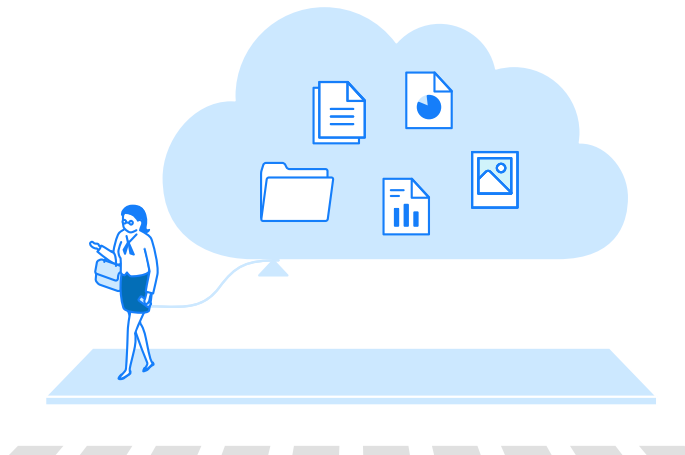


Chats—identify members who have read the group dialog; save data files in cloud storage forever.

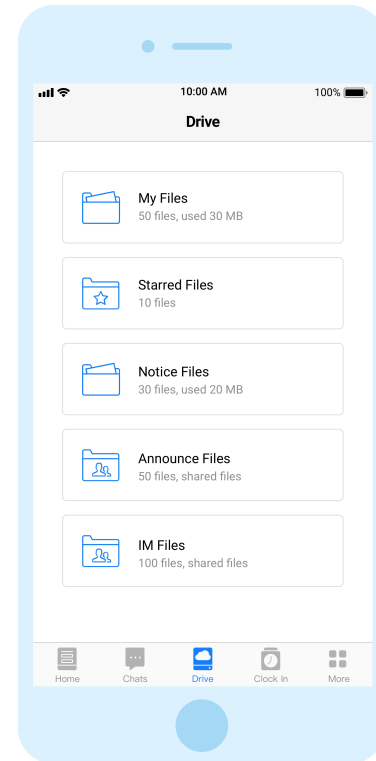




Share of cloud data, enterprise exclusive internal cloud storage is quipped with high level information security structure, team members can access enterprise sharing data with authorization to increase efficiency of document management.

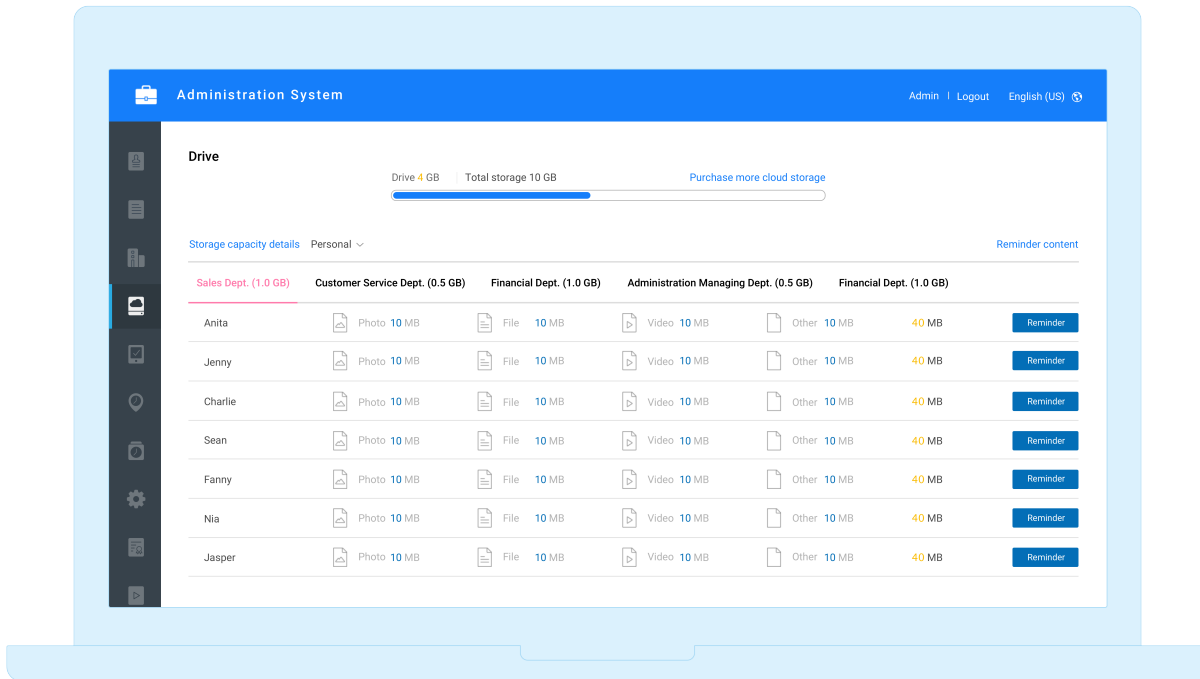


Drive—easy access and sharing with simple operations. Cloud remote backup without consuming space on cellphones and computers



Drive Administration System ►

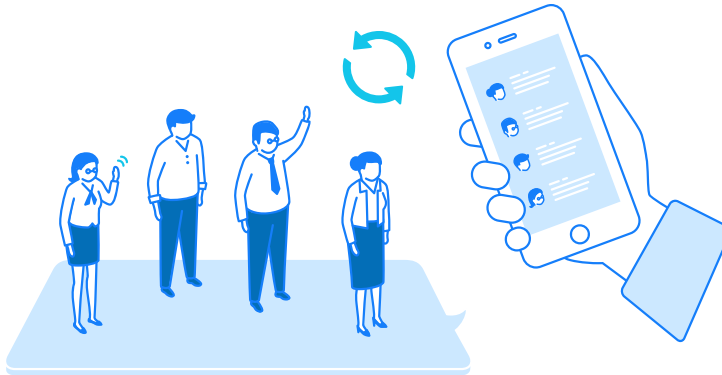
Administrators may monitor cloud space usage and add more on demands.



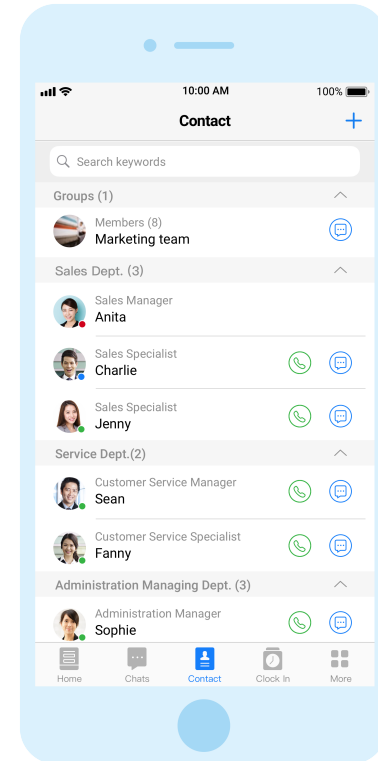


Contact

Sync and provide address books for business contacts in mobile devices of colleagues. These data are updated online to avail consistent contact information for searching and communication.

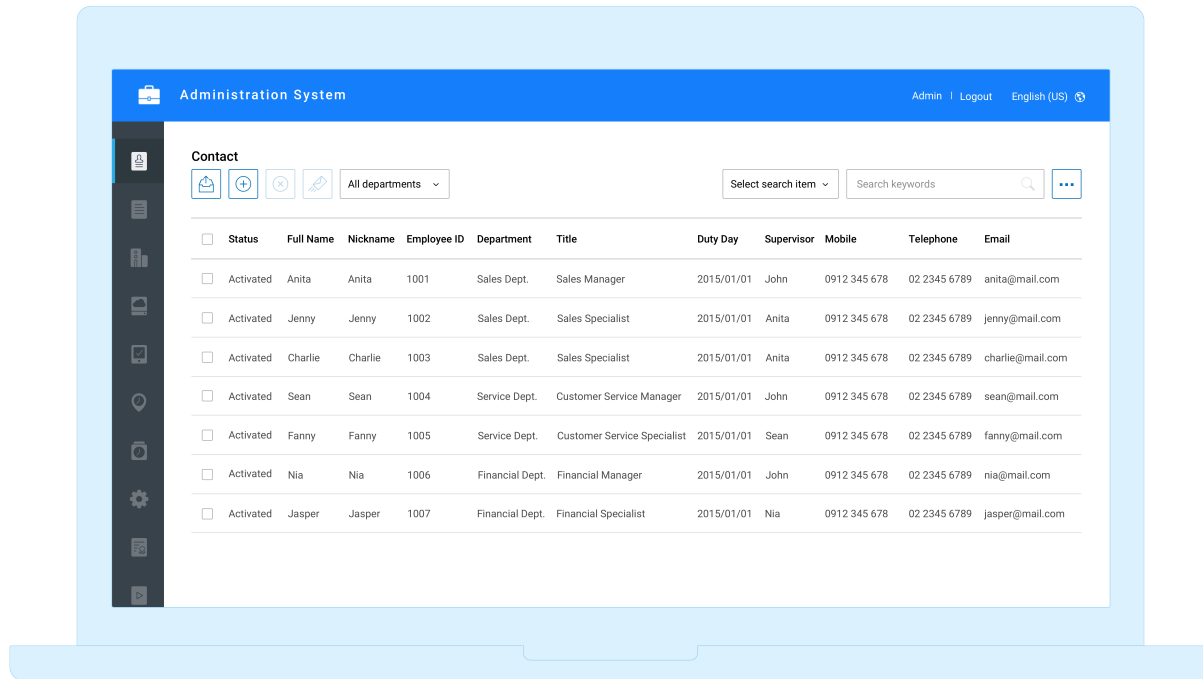


Contact—keep contact data only clicks away for convenient communication with colleagues.



Contact Administration System ►

Add new hire data online or by batch file import for easy and quick personnel data updating.

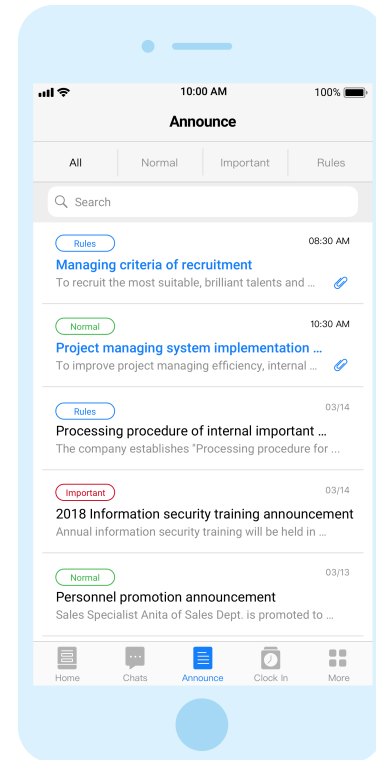


Announce

Enterprise online announcement system, announcement date can be predesignated and files can be attached, announcement read status can be viewed to ensure enterprise important messages are transmitted.

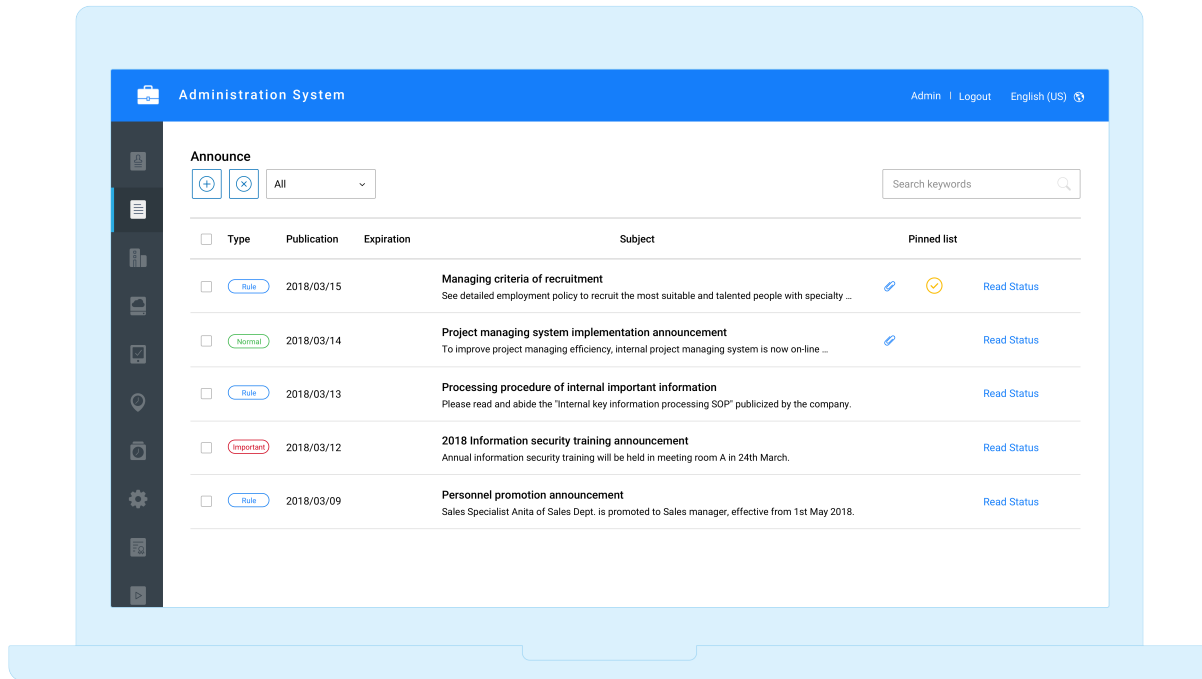


< Announce—identify members who have read the message and ensure key information from the administration unit is well acknowledged.



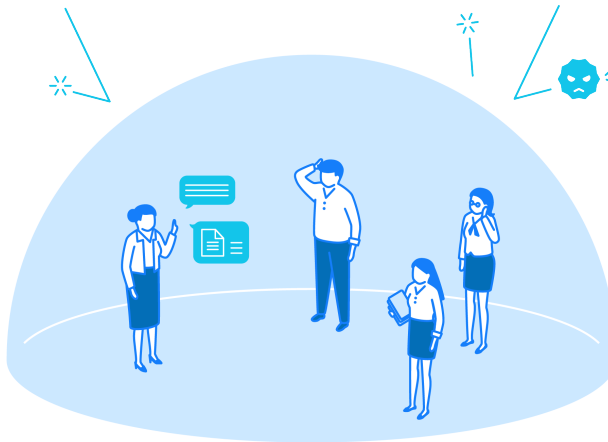
Announce Administration System ►

Company announcements can be created in categories and publicized in schedule; the system also tells whether individual employee has read announcements he/she required to do so.

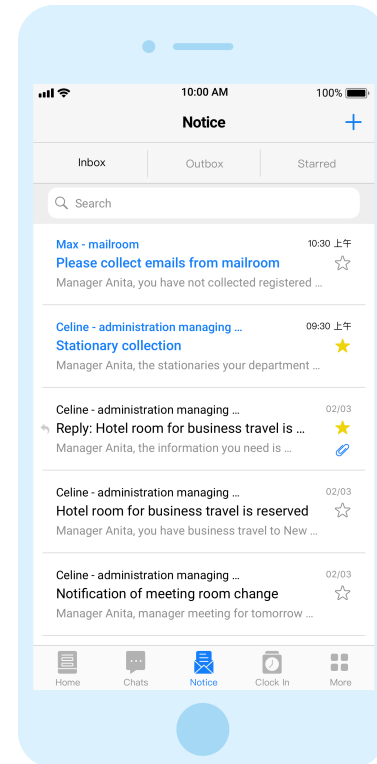


Notice

Internal instant notification function allows transmission of messages or files to assigned personnel; high level information security structure protects privacy of business messages to allow fast and secure information transmission for teams.



Notice—alert external notifications with email and internal notifications with WorkLink to prevent your mailbox from being overloaded.



—— Diverse services, the best choice for enterprise business applications ——



High-performance and stable

Adoption of high-performance enterprise grade cloud server and original program design of applications that make service fast and stable



Friendly interface

Support various major mobile devices and computers. The stylish extension for interface is easy to use and manage.



Billing based on service authorization

Billing per cloud storage capacity and subscription period, simple billing method makes budget control easy.



Fast deployment

Easy deployment set up, standardized import process to demonstrate service result rapidly.



Flexible resources

Cloudized operating mechanism, adjust system resource distribution automatically according to service load.



Perfect service

Perfect platform service support mechanism, the perpetual function updates to ensure permanent service effectiveness.

Maximum protection, ultimate service

WorkLink with world leading cloud service provider - Amazon Web Services, AWS. The service infrastructure uses dynamic load balancing server that can distribute hardware resources flexibly anytime based on traffic conditions, together with dynamic cache services and dynamic storage devices to ensure the continuation of services without any interruption. WorkLink adopts latest OAuth 2.0 sign in verification and authorization protocol for account verification, data transmission is encrypted via SSL/TLS security protocol. Providing maximum and full protection for server and customer database.



Strict security control mechanism

Employ grouped and tiered security control; every move is logged for tracking and review to secure system platform.



Encrypted transmission processing

Secure data transmissions by SSL/TLS 1.2 encryption; set up secure transmission channel with key and Advanced Encryption Standard (AES).



Single device login

Each account can have unique device login at any one time to provide high security protection and ensure consistent service information connection rather than impersonated by someone else.



High-speed, low-latency network transmission

Employ global content delivery network (CDN) service architecture to reduce network latency by direct connecting to national ISPs through highly efficient internal backbone network.



Multi-layer protection and decentralized fault-tolerant architecture

Employ decentralized fault-tolerant architecture with group-tier isolation to provide customers with secure and reliable data transmission and storage services. Employ cloud servers in environment with independent power supply, air conditioning, network environment spanning multiple data centers, and 24x7 monitoring mechanism.



Cross-border instant backup mechanism

Save data is instantly in physical facilities located in different countries for off-site backup; auto instant back up data to backup center in another country to provide users with the optimum file durability.



OAuth 2.0 resource protection


Employ standard OAuth 2.0 mechanism for access resource protection. Users may access files only after successful authenticate and with valid token.





Pricing


· Standard functions


Free


 **BIM Business instant message**


 Announcement

 1GB of space

 Notification

 Contact

 Company information

 Administration system

Full functional value added modules: free trial run for 15 days


· Premium Storage

 **USD 40** /month (tax excluded)


 **USD 120** /month (tax excluded)

 **Volume capacity solution**
please go to the administration system purchase.


· Premium Function

 **BPM Business process management**

USD 120 /month (tax excluded)
✓ Business Process Management, BPM
✓ Electronic Form

 **FSM Field Service Management**

USD 120 /month (tax excluded)
✓ Multi-Check In
✓ Attendance record

 **EAM Employee Attendance Management**

USD 40 /month (tax excluded)
✓ Mobile check in/out
✓ Attendance record

FAQ

| What is the difference between a function of instant communication and private communication APP?

WorkLink integrates the most in need functions inside a company under the framework of high level information security, for example, instant communication and mobile approval, allowing enterprise users to utilize various functions in a single platform, realizing the idea of a mobile office.

| What enterprise is suitable to use WorkLink?

WorkLink provides complete functions in all aspects, suitable for business of all types and of any scales.

| Can I use WorkLink during a business trip in other countries?

WorkLink is available as long as there is internet access. No important company message will be missed out and all business function is operable even in a business trip around the world.

| Does company have to buy a computer server to use WorkLink?

WorkLink provides cloud services, allowing enterprise users to access anytime anywhere securely. There is no need to build up server nor purchase software and hardware, it can be downloaded as long as there is a intelligent mobile phone.

| What is the pricing advantage?

WorkLink charges per single enterprise total cloud storage, account numbers are not limited. WorkLink keeps improving current functions and adding new ones.

| Is it possible to login from different devices at the same time?

For security purposes, login is restricted to a single mobile device, however, WEB version can be accessed at the same time. Operating via mobile device or PC according to work demands that expand the world of the mobile office.

| Will WorkLink keep updating product version and launch new functions?

WorkLink will keep updating product version to improve the system and to include more new functions. While there is notification of new version, the APP is updated immediately online and latest services become available, all files and data of the account stay unchanged.

| Are installation and activation complicated?

After administrator sets up user accounts, the users can download WorkLink APP or login to WEB version with account and password to start using the services.

| What languages are supported?

WorkLink supports traditional Chinese, simplified Chinese, English and other languages.

| If there is a usage problem?

WorkLink has specialized consultants and customer service teams, please contact WorkLink during office hour or email to customer service.



WorkLink,
an **eco-friendly** solution.

The contents of this material (including but not limited to WorkLink trademarks, brands, products, text and pictures, etc.) are owned, written or legally authorized for use by the Service



info.worklink.services



contact@worklink.services



0800-060-798